

A Defining Moment

2014 REPORT TO THE COMMUNITY



Heal a life through organ and tissue donation

Our Mission

Donor Network West saves and heals lives through organ and tissue donation. We honor and respect the donors and families we serve with compassionate care, and inspire our communities to donate life.

On the cover: Ailee (5), liver recipient

Letter from the CEO

Each of us can think of a moment in our lives that was so transformational that it simply took our breath away. We can also think of different occasions that seem simple yet are equally cherished; a perfect day at the park, a family reunion, or your first big move.

For nearly three decades, we have been honored to facilitate many beautiful moments through the miracle of organ, eye, and tissue donation as the California Transplant Donor Network (CTDN), and now as Donor Network West. The accomplishments for 2014, attained under CTDN, were made possible by the selfless donors, giving families, partner hospitals, coroners, and funeral homes that partner with us to save and heal lives.

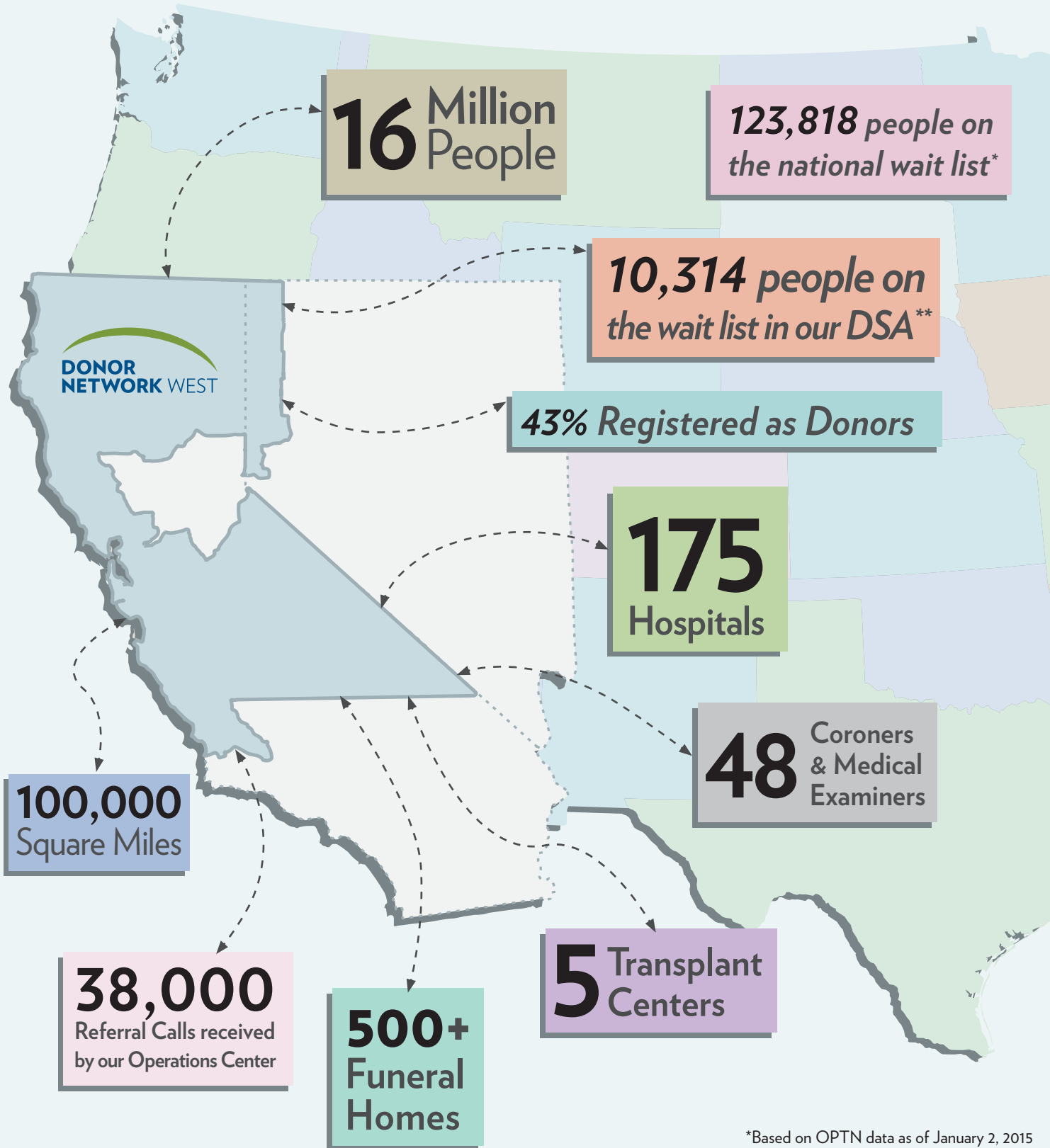
We are in the midst of a defining moment with our recent name change and move to our new headquarters in San Ramon, CA. We are delighted to share our defining moments with you. We've rebranded, we've moved, and we now look forward to better serving our communities. Thank you for your continued partnership, as we work together to save and heal more lives.

Cindy Siljeström


Chief Executive Officer



Donor Network West Donation Service Area



*Based on OPTN data as of January 2, 2015

**Based on OPTN data as of December 31, 2014

Ailee's Defining Moment

Ailee brightens the day of those around her with her jokes and infectious smile. Ailee's defining moment came early; she was only six months old when she received a liver transplant that saved her life. Now five years old, she loves singing, dancing, drawing, and pretending to be a princess.



Kenny's Defining Moment



Kenny was an all-around athlete until he injured his knee. His defining moment came when he received an ACL that allowed him to go back to playing and coaching baseball. Thanks to the gift of mobility, he can also enjoy his other favorite sports: football, basketball, weight lifting, and rock climbing.

ORGANS

305
ORGAN
DONORS

475



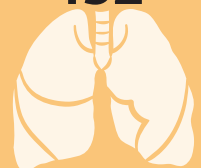
Kidneys

245



Livers

132



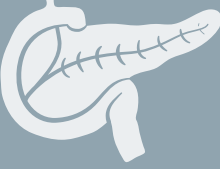
Lungs

115



Hearts

39



Pancreas

1



Intestine

1,007
ORGANS
TRANSPLANTED

TISSUES

2,223
TISSUE
DONORS

1,785



Skin

1,497



Corneas

1,341



Bones

174



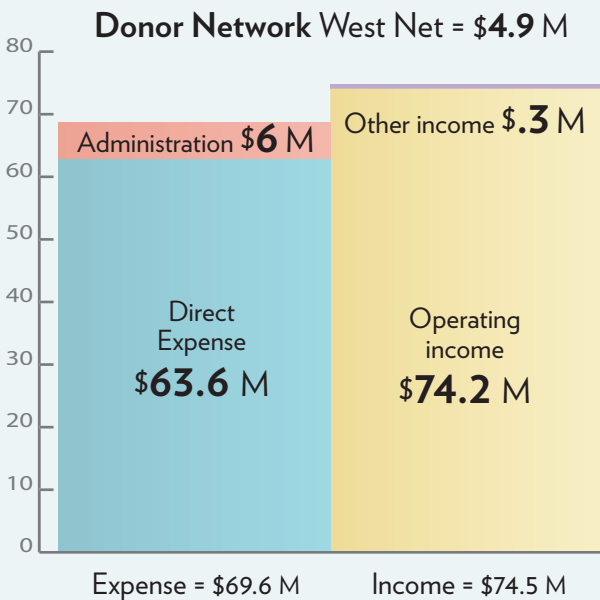
Heart Valves

11

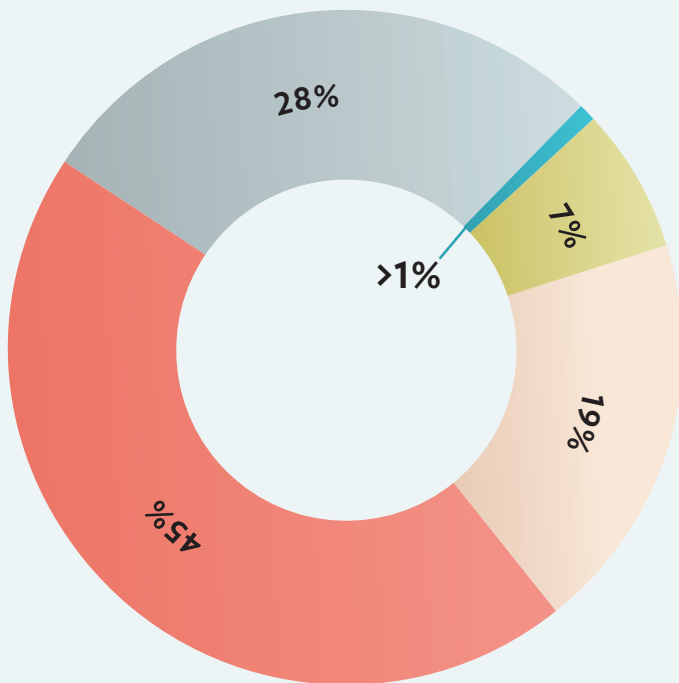
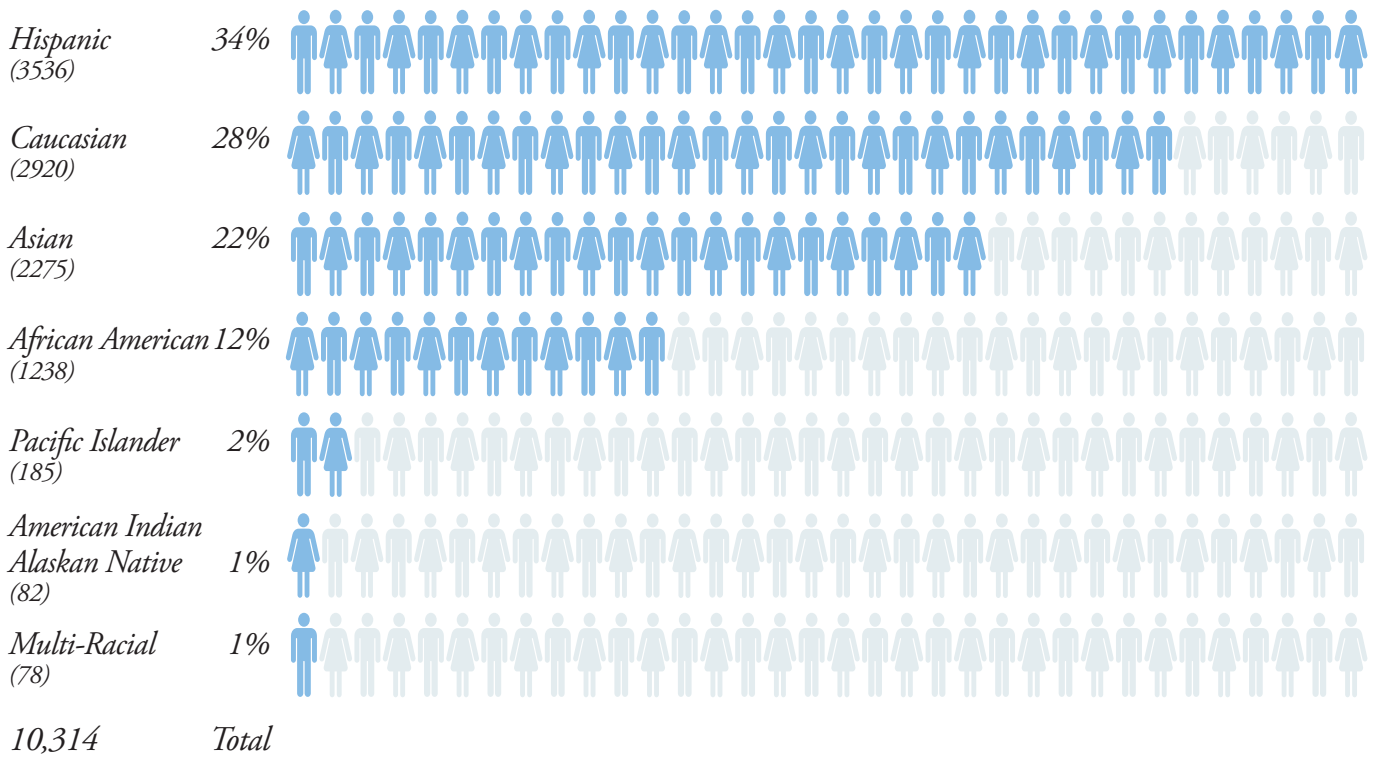


Veins

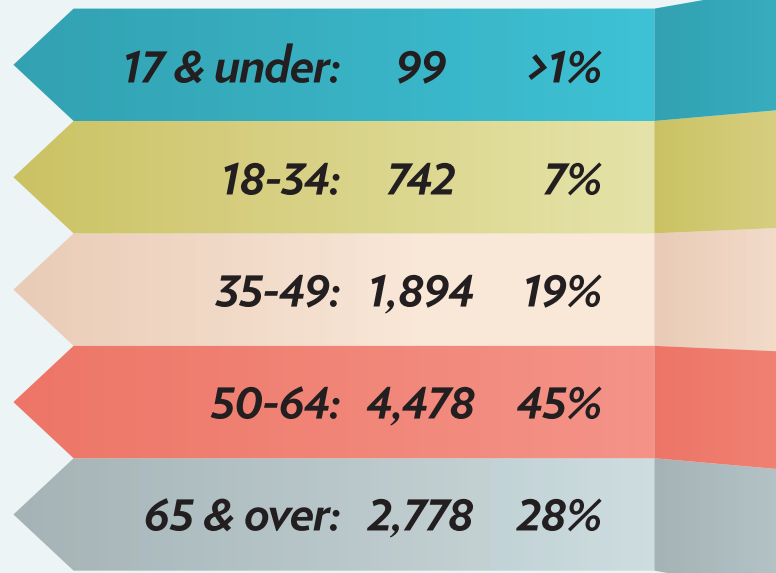
92,000
LIVES
IMPROVED



Transplant Wait List by Ethnicity*



Transplant Wait List by Age**



*Based on OPTN data as of December 31, 2014

**Based on OPTN data as of May 8, 2015

Mohan's Defining Moment

Mohan was at the height of his career as an engineer when he suffered his first heart attack at the age of 35. His defining moment came more than 22 years ago when he received a donated heart and, though he has enjoyed great success as an entrepreneur; nothing brought him more joy than being able to see his daughters grow up. During the hard times, Mohan found strength and comfort in his family and his faith.

Left to right: Subina, Arvinder, Mohan, Simran, and Kulwant



2014 Board Of Directors

Chairperson

Nancy Lee, RN, MSN, NEA-BC
Chief Nursing Officer &
VP of Patient Care Services
Stanford Hospital & Clinics
Executive Committee Chair

Secretary-Treasurer

Reece Fawley
Executive Director
Health Plan Strategy & Transplantation
Chief Contracting Officer,
UCSF Medical Center &
UCSF Benioff Children's Hospital
Executive Committee
Finance Committee Chair

Chief Executive Officer

Cynthia D. Siljestrom
Donor Network West
Ex-Officio
Executive Committee
Finance Committee

Board Members

Tim Buckhout
Coroner/ME, Retired
Audit Committee

Brian Dowling
VP of Public Affairs
Compensation Committee

Carlos Esquivel, M.D., PhD
Chief of Division of Transplantation
Lucile Packard Children's
Hospital at Stanford

Hamila Kownacki, RN
Chief Operating Officer,
California Pacific Medical Center
Executive Committee
Finance Committee

Lloyd R. Lacuesta
Journalist, Retired

Kathleen F. Lynaugh, BS/RN, MBA, JD
Associate General Counsel
Blue Shield of California, San Francisco
Executive Committee
Compensation Committee Chair

John Rabkin, M.D., FACS
Department of Transplantation
California Pacific Medical Center

John P. Roberts, M.D.
UCSF Medical Center
Transplant Service

Jill Sullivan, RN, MSN
Vice President of Hospital
Transformation
Heart & Transplant Service Lines
Lucile Packard Children's
Hospital at Stanford
Executive Committee
Compensation Committee

Catherine Lan Tran, MBA
Chief Financial Officer, Retired
Audit Committee
Compensation Committee

Dolly B. Tyan, PhD (ABHI)
Histocompatibility,
Immunogenetics & Disease
Profiling Laboratory
Stanford University Blood Center

Michelle V. Zyromski, Esq.
Zyromski Konicek, LLP

2014 Senior Leadership Team

Cindy Siljestrom
Chief Executive Officer

Nikole Neidlinger, M.D.
Medical Director

Denise Kinder
Chief Operations Officer

Sandra Mejia
Chief Financial Officer

Mark Borer
Vice President of Quality Systems

JT Mason
Vice President of Information
Technology

Sean Van Slyck
Vice President of Organ Program

Colleen Cieszkowski
Director of Hospital & Family Services

Tasia Estes
Senior Risk Analyst

Susan Hall
Director of Quality Systems

Luis Mayen
Director of Procurement Services

Cathy Olmo
Director of Communications

Sandy Olson
Controller

Kim Patton
Director of Clinical Services

Angela Rosati
Director of Tissue Services

Patti Sutalo
Director of Human Resources



2014 Medical Advisory Board

Co-Chairs

Nikole Neidlinger, M.D.
Donor Network West Medical Director
Abdominal Transplant Surgeon
California Pacific Medical Center

Ryutaro Hirose, M.D.
Professor of Clinical Surgery
Division of Transplant Surgery
UCSF Medical Center

Members

Eloa S. Adams, M.D.
Medical Director, PICU
Kaiser Permanente East Bay at
The Oakland Medical Center

James Avery, M.D.
Surgical Director of Heart
Transplant Program
California Pacific Medical Center

W. Christopher Bandy, M.D., FACS
Chief of Trauma & Emergency Surgery
Kaiser Foundation Hospital – Vacaville

Michael J. Bauer, M.D.
Donor Network West Tissue
Services Medical Director

Julie Brown
Julie Brown Associates

William Bry, M.D.
Director of Kidney and Pancreas
Transplant Program
California Pacific Medical Center

Stephan Busque, M.D.
Director, Adult Kidney &
Pancreas Program
Associate Professor
Stanford Medical Center

Dean Charkow, RN, CCRN
Manager, Critical Care Services
John Muir Medical Center

Waldo Concepcion, M.D., FACS
Professor of Surgery –
Multi Organ Transplantation
Chief of Clinical Transplantation
Chief of Pediatric Kidney
Transplantation
Stanford University School of Medicine

Terry Dentoni, RN, MSN, CNL
Critical Care, Perioperative
Services & Specialty Clinics
Nursing Director
San Francisco General Hospital

James Forsell, PhD
Retired Tissue Bank CEO

Richard Ha, M.D.
Clinical Instructor,
Cardiothoracic Surgery
Stanford University Medical Center

Jasleen Kukreja, M.D., MPH
Assistant Professor of Surgery
Division of Adult
Cardiothoracic Surgery
UCSF Medical Center

Phyllis Monroe, RN
Donor Family Member

Richard Powers, M.D.
Medical Director of Newborn Services
Neonatal Intensive Care Unit
Good Samaritan Hospital

Rajalingam Raja, PhD (ABHI)
Clinical Professor,
Department of Surgery
Director, Immunogenetics and
Transplantation Laboratory
University of California, San Francisco

Olaf Reinhartz, M.D.
Division Chief of Pediatric
Cardiothoracic Surgery
Stanford University Medical Center
Lucile Packard Children's Hospital

David Shimabukuro, M.D.
Associate Professor
Medical Director 13 ICU
University of California,
San Francisco Department of
Anesthesia & Perioperative Care

Penny Stroud
Cattaneo & Stroud, Inc.
Voluntary Public Health
Organization Members

Alan Yee, DO
Stroke & Critical Care Neurologist
Comprehensive Stroke Care
California Pacific Medical Center

Donor Network West Donation Service Area partners save lives through donation

In 2014, Donor Network West recovered 1,007 organs from 305 donors. In addition, 2,223 people said “yes” to tissue donation resulting in 92,000 lives saved and improved. Our selfless donors, giving families, partner hospitals, coroners, and funeral homes contributed to make this possible.

Tissue Donors: The number of donors from whom a transplantable tissue was recovered.

Organ Referrals: The number of times a hospital contacted Donor Network West due to a patient with a non-survivable illness or an injury.

Potential Organ Donors: All referrals determined to have potential for organ donation.

Organ Donors: The number of donors from whom a transplantable organ was recovered.

Organs Transplanted: How many organs were transplanted; reflects that several organs can come from a single donor.

Partner	Tissue Donors	Organ Referrals	Potential Organ Donors	Organ Donors	Organs Transplanted
East Bay	507	501	125	54	191
Alameda County Coroner	7	-	-	-	-
Alameda Hospital	13	3	0	0	0
Alta Bates Summit Medical Center Alta Bates Campus	10	10	1	0	0
Alta Bates Summit Medical Center Summit Campus	25	20	2	0	0
Contra Costa County Coroner	0	-	-	-	-
Contra Costa Regional Medical Center	3	4	0	0	0
David Grant Medical Center	3	1	0	0	0
Doctors Medical Center San Pablo	13	10	2	0	0
Eden Medical Center	34	74	23	13	49
Fairmont Hospital	0	-	-	-	-
Highland Hospital	20	52	23	9	40
John Muir Medical Center Concord Campus	46	15	2	0	0
John Muir Medical Center Walnut Creek Campus	37	75	28	13	42
Kaiser Foundation Hospital Antioch	11	12	1	1	2
Kaiser Foundation Hospital Fremont	11	5	2	0	0
Kaiser Foundation Hospital Oakland	24	17	6	2	5
Kaiser Foundation Hospital Richmond	13	5	2	2	7
Kaiser Foundation Hospital San Leandro	20	17	2	1	3
Kaiser Foundation Hospital Vacaville	22	13	5	2	10
Kaiser Foundation Hospital Vallejo	20	6	2	0	0

Partner	Tissue Donors	Organ Referrals	Potential Organ Donors	Organ Donors	Organs Transplanted
Kaiser Foundation Hospital Walnut Creek	26	4	0	0	0
Kindred Hospital SF Bay Area	1	0	0	0	0
Livermore VA Nursing Home Care Center	1	-	-	-	-
NorthBay Medical Center	25	21	8	5	11
NorthBay VacaValley Hospital	6	1	0	0	0
San Leandro Hospital	5	6	0	0	0
San Ramon Regional Medical Center	14	6	1	1	4
St. Rose Hospital	22	35	1	0	0
Sutter Delta Medical Center	23	21	1	0	0
UCSF Benioff Children’s Hospital Oakland	4	15	6	0	0
ValleyCare Livermore Campus	2	0	0	0	0
ValleyCare Medical Center	26	14	1	0	0
Washington Hospital	20	39	6	5	18
Fresno	345	536	120	50	183
Adventist Medical Center-Hanford	22	21	3	0	0
Adventist Medical Center-Reedley	3	0	0	0	0
Adventist Medical Center-Selma	5	0	0	0	0
Chowchilla Skilled Nursing Facility	0	-	-	-	-
Clovis Community Medical Center	21	32	2	0	0
Coalinga Regional Medical Center	2	0	0	0	0
Community Regional Medical Center	119	309	85	41	150

Partner	Tissue Donors	Organ Referrals	Potential Organ Donors	Organ Donors	Organs Transplanted
Fresno County Coroner	1	-	-	-	-
Fresno Heart and Surgical Hospital	4	7	1	0	0
Kaiser Foundation Hospital Fresno	18	10	1	0	0
Kaweah Delta Medical Center	52	39	3	1	7
Kings County Coroner	1	-	-	-	-
Madera Community Hospital	13	2	0	0	0
Madera County Coroner	1	-	-	-	-
Porterville Developmental Center	1	-	-	-	-
Saint Agnes Medical Center	45	60	8	3	8
Sierra View District Hospital	19	13	1	1	5
Tulare County Coroner	0	-	-	-	-
Tulare Regional Medical Center	9	4	0	0	0
VA Central California Health Care System	1	2	0	0	0
Valley Children's Hospital	8	37	16	4	13
Modesto	259	452	99	35	101
Central Valley Specialty Hospital	1	-	-	-	-
Community Hospice	1	-	-	-	-
Dameron Hospital	9	31	6	1	0
Doctors Hospital of Manteca	3	7	2	0	0
Doctors Medical Center Modesto	45	110	35	14	37
Emanuel Medical Center	15	20	2	0	0
John C. Fremont Healthcare District	1	0	0	0	0
Kaiser Foundation Hospital Manteca	3	3	0	0	0
Kaiser Foundation Hospital Modesto	17	20	1	0	0
Lodi Memorial Hospital	21	6	2	1	4
Memorial Hospital Los Banos	2	0	0	0	0
Memorial Medical Center	59	56	18	10	35

Partner	Tissue Donors	Organ Referrals	Potential Organ Donors	Organ Donors	Organs Transplanted
Mercy Medical Center Merced	22	53	7	3	11
Oak Valley District Hospital	7	2	0	0	0
San Joaquin County Coroner	1	-	-	-	-
San Joaquin General Hospital	7	52	8	2	9
San Joaquin Valley Rehab Hospital	1	-	-	-	-
Sonora Regional Medical Center	7	7	0	0	0
St. Joseph's Medical Center Stockton	29	78	18	4	5
Sutter Tracy Community Hospital	7	7	0	0	0
Tuolumne County Coroner	1	-	-	-	-
Northern	312	396	137	56	186
Banner Churchill Community Hospital	2	0	0	0	0
Banner Lassen Medical Center	1	0	0	0	0
Butte County Coroner	1	-	-	-	-
Carson Tahoe Continuing Care Hospital *	-	0	0	0	0
Carson Tahoe Regional Medical Center *	-	9	3	3	6
Carson Valley Medical Center	2	0	0	0	0
Del Norte County Coroner	1	-	-	-	-
Enloe Medical Center	58	53	12	4	12
Fairchild Medical Center	5	0	0	0	0
Feather River Hospital	14	14	3	0	0
Frank R. Howard Memorial Hospital	2	1	0	0	0
Glenn Medical Center	2	0	0	0	0
Humboldt County Coroner	3	-	-	-	-
Humboldt General Hospital *	-	0	0	0	0
Jerold Phelps Community Hospital	1	0	0	0	0
Mad River Community Hospital	4	2	1	0	0
Mammoth Hospital *	-	0	0	0	0

Partner	Tissue Donors	Organ Referrals	Potential Organ Donors	Organ Donors	Organs Transplanted
Mayers Memorial Hospital	2	0	0	0	0
Mendocino Coast District Hospital	1	0	0	0	0
Mercy Medical Center Mt. Shasta	6	1	0	0	0
Mercy Medical Center Redding	45	45	21	9	40
Modoc Medical Center	0	0	0	0	0
Mount Grant General Hospital *	-	0	0	0	0
Napa County Coroner	5	-	-	-	-
Northern Inyo Hospital *	-	0	0	0	0
Northern Nevada Medical Center	9	9	2	0	0
Orchard Hospital	2	1	1	0	0
Oroville Hospital	10	16	4	3	13
Patient's Hospital of Redding	0	-	-	-	-
Plumas District Hospital	0	0	0	0	0
Redwood Memorial Hospital	6	2	0	0	0
Renown Regional Medical Center	0	154	64	25	83
Saint Mary's Regional Medical Center	30	21	7	1	3
Seneca District Hospital	4	0	0	0	0
Shasta County Coroner	1	-	-	-	-
Shasta Regional Medical Center	27	44	12	8	20
Sonoma County Coroner	7	-	-	-	-
Southern Inyo Hospital*	-	0	0	0	0
St. Elizabeth Community Hospital	6	2	0	0	0
St. Helena Hospital Clearlake	7	0	0	0	0
St. Joseph Hospital Eureka	22	13	5	3	9
Surprise Valley Community Hospital	1	0	0	0	0
Sutter Coast Hospital	8	4	2	0	0
Sutter Coast Home Care	0	-	-	-	-
Sutter Lakeside Hospital	4	0	0	0	0

Partner	Tissue Donors	Organ Referrals	Potential Organ Donors	Organ Donors	Organs Transplanted
Trinity Hospital	0	0	0	0	0
Ukiah Valley Medical Center	7	2	0	0	0
VA Sierra Nevada Health Care System [Reno VA] *	-	3	0	0	0
Vibra Hospital of Northern California	6	0	0	0	0
South Coast	467	696	132	59	199
Arroyo Grande Community Hospital	6	2	1	1	6
Community Hospital of Monterey Peninsula	40	20	4	2	5
Dominican Hospital	18	31	3	0	0
El Camino Hospital	36	33	7	2	6
El Camino Hospital Los Gatos	5	3	1	0	0
French Hospital Medical Center	10	2	0	0	0
George L. Mee Memorial Hospital	1	0	0	0	0
Good Samaritan Hospital	43	45	9	0	0
Hazel Hawkins Memorial Hospital	1	5	0	0	0
Kaiser Foundation Hospital San Jose	30	17	4	3	7
Kaiser Foundation Hospital Santa Clara	34	50	5	2	6
Lucile Packard Children's Hospital	5	31	9	3	10
Monterey County Coroner	2	-	-	-	-
Natividad Medical Center	12	11	4	3	10
O'Connor Hospital	14	19	4	2	2
Regional Medical Center of San Jose	40	146	25	12	46
Saint Louise Regional Hospital	8	4	2	2	4
Salinas Valley Memorial Hospital	15	27	7	2	5
San Benito County Coroner	0	-	-	-	-
Santa Clara County Coroner	11	-	-	-	-
Santa Clara Valley Medical Center	33	29	13	7	26

Partner	Tissue Donors	Organ Referrals	Potential Organ Donors	Organ Donors	Organs Transplanted
Santa Cruz County Coroner	2	-	-	-	-
Sierra Vista Regional Medical Center	9	20	14	8	39
Stanford Hospital and Clinics	58	184	17	8	20
Twin Cities Community Hospital	14	7	2	2	7
Veterans Administration Hospital Menlo Park	0	0	0	0	0
Veterans Administration Palo Alto Health Care System	13	0	0	0	0
Watsonville Community Hospital	7	10	1	0	0
West Bay	333	356	108	51	147
California Pacific Medical Center California Campus	1	2	0	0	0
California Pacific Medical Center Davies Campus	15	24	15	8	17
California Pacific Medical Center Pacific Campus	22	34	12	9	20
California Pacific Medical Center St. Luke's Campus	2	2	0	0	0
Chinese Hospital	0	0	0	0	0
Healdsburg District Hospital	0	0	0	0	0
Kaiser Foundation Hospital Redwood City	18	49	6	4	18
Kaiser Foundation Hospital San Francisco	14	3	2	2	6
Kaiser Foundation Hospital San Rafael	13	4	0	0	0
Kaiser Foundation Hospital Santa Rosa *	-	7	2	2	4
Kaiser Foundation Hospital South San Francisco	7	1	0	0	0
Kentfield Rehabilitation & Specialty Hospital	1	1	0	0	0
Laguna Honda Hospital and Rehab Center	0	0	0	0	0
Marin County Coroner	0	-	-	-	-
Marin General Hospital	26	21	6	2	6

Partner	Tissue Donors	Organ Referrals	Potential Organ Donors	Organ Donors	Organs Transplanted
Mills-Peninsula Medical Center	25	17	3	2	4
Novato Community Hospital	5	2	1	0	0
Palm Drive Hospital	1	0	0	0	0
Petaluma Valley Hospital *	-	2	1	0	0
Queen of the Valley Medical Center	26	17	3	3	11
Saint Francis Memorial Hospital	5	17	3	1	1
San Francisco General Hospital	17	60	28	11	38
San Francisco Veteran Affairs Medical Center	5	1	0	0	0
San Mateo County Coroner	3	-	-	-	-
San Mateo Medical Center	11	4	2	0	0
Sequoia Hospital	13	6	2	0	0
Seton Medical Center	17	12	4	0	0
Seton Medical Center Coastsides	1	0	0	0	0
Sonoma Valley Hospital	7	0	0	0	0
St. Helena Hospital	8	6	0	0	0
St. Mary's Medical Center San Francisco	4	3	2	0	0
UCSF Medical Center Mount Zion Campus	49	0	0	0	0
UCSF Medical Center Parnassus Campus	0	58	16	7	22
Veteran's Home of California Yountville	1	0	0	0	0
Burlingame Health Care Center	1	0	0	0	0
Sonoma Developmental Center	2	0	0	0	0
Other Sources**	13	3	0	0	0
Donor Network West Grand Total	2223	2937	721	305	1007

- Facility has no potential for donation.

* Not a participating tissue donation partner.

** Other sources include referrals from families, funeral homes and hospice organizations.



Donor Network West saves and heals lives through organ and tissue donation. We honor and respect the donors and families we serve with compassionate care, and inspire our communities to donate life.



A Donate Life Organization

Main Office:

Donor Network West
12667 Alcosta Blvd., Suite 500
San Ramon, CA 94583

Fresno Office:

Donor Network West
1040 East Herndon Ave. #104
Fresno, CA 93720

San Leandro Office:

Donor Network West
1850 Fairway Dr.
San Leandro, CA 94577

Reno Office:

Donor Network West
1495 Ridgeway Dr. #90
Reno, NV 89519

DONORNETWORKWEST.org

888.570.9400